

# Many ways to get involved in your neighborhood!



Focus on regional transportation, development, and safety. Meetings are monthly: Fourth Tuesdays, 7:00-9:00 pm, Holly Park Community Church.



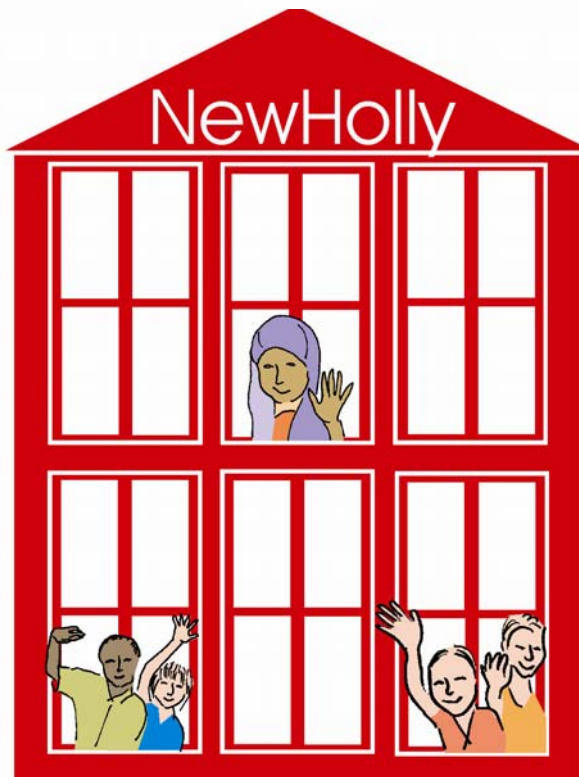
Focus on community involvement and input into the development of the Othello Town Center surrounding Othello Link Light Rail Station. Third Mondays 6:30-8:00 pm, NewHolly Campus



NewHolly sends a neighborhood representative from the Traffic, Parks, & Safety Committee to attend this monthly meeting with the Chief and report back.



Focus on informing the community about major issues facing SE, Fourth Wednesdays, 6:30-8:30 pm, Rainier Community Center. [www.sedistrictcouncil.org](http://www.sedistrictcouncil.org)



Volunteer to help decide what programs and activities Van Asselt Community Center provides. Third Wednesdays, 6:30-8:00 pm, VACC.



Agencies, organizations, and participants work together to achieve the goals of the Campus. Meetings and event times vary. For information contact 723-1725.



All homeowners in NewHolly are members. Annual meeting in January. Board meetings monthly. Contact [ken@cwdgroup.com](mailto:ken@cwdgroup.com)



Group meets to learn about crime prevention and interact with the Seattle Police Department. First Wednesdays, 7:00-8:00 pm, SE Senior Center.

# NewHolly Community Committees



If you have an idea for a fun project, or have concerns about a troubling community issue, please talk with your neighbors & Community Builder.

So you can work together with others to find a solution!

## WELCOME



**2nd Thursdays  
6:30-8:00 pm  
Campus**

Greet new neighbors and put together welcome gift boxes with free materials.

## MULTICULTURAL COMMUNICATION



**2nd Mondays  
7:00-8:30 pm  
Campus**

Learn about other cultures, meet neighbors, promote positive relationships, and organize cultural and social events in NewHolly.

## TRAFFIC, PARKS, & SAFETY



**3rd Tuesdays  
6:00-7:30 pm  
Campus**

Work with local volunteers, staff, and resources to protect the safety and cleanliness of NewHolly parks, streets, and common areas

## DISASTER PREPARATION



Volunteers are working together to help every family in NewHolly become prepared BEFORE a disaster. Trainings and free kits to come. Contact 723-1725 to learn more.

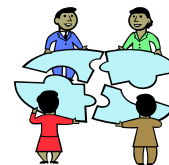
## PARENTS



**2nd Thursdays  
6:30-8:00 pm  
Campus  
(Spring & Summer)**

NewHolly parents and grandparents come together to share experience, learn, & have fun. Annual Mother's Day Event.

## CAMPUS COORDINATION



Residents, staff, and participants working together so that programs on Campus are relevant and vital to the community. Contact 723-1725 to learn more.

**\$5000 per year to support activities & projects!**



For more information, please contact the NewHolly Community Building Office,