

GENERAL NOTES

- A. ALL EXTERIOR DUCTWORK SHALL BE INSULATED TO R-11, WITH INTERIOR DUCT LINING.
- B. DUCTS SHALL BE PRESSURE TESTED TO 2".
- C. DEMO AND REMOVE EXISTING CORRIDOR VENTILATION UNIT AND SUPPORTS AND REPAIR ROOF.
- D. DEMO AND REMOVE EXISTING BATHROOM EXHAUST VENT HOODS.

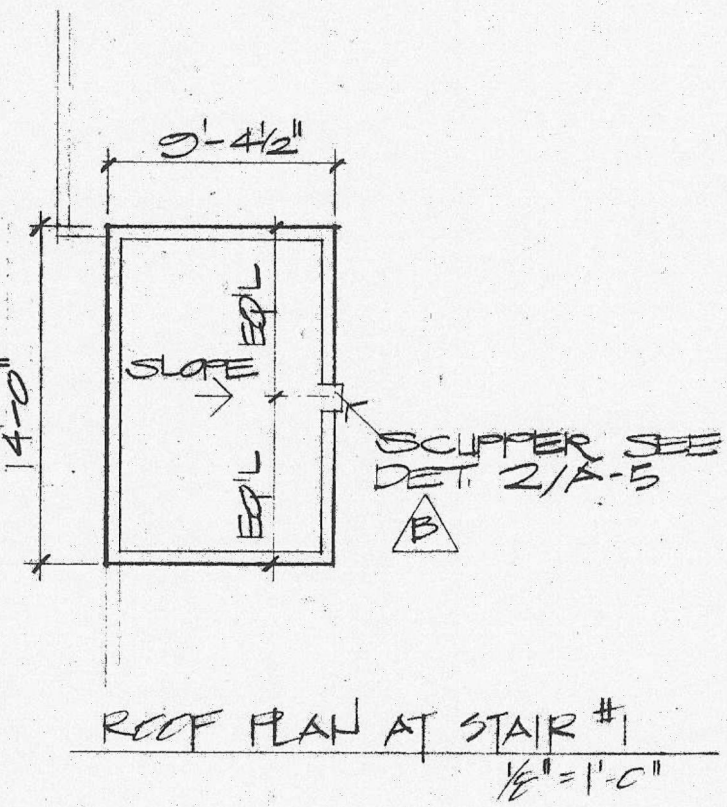
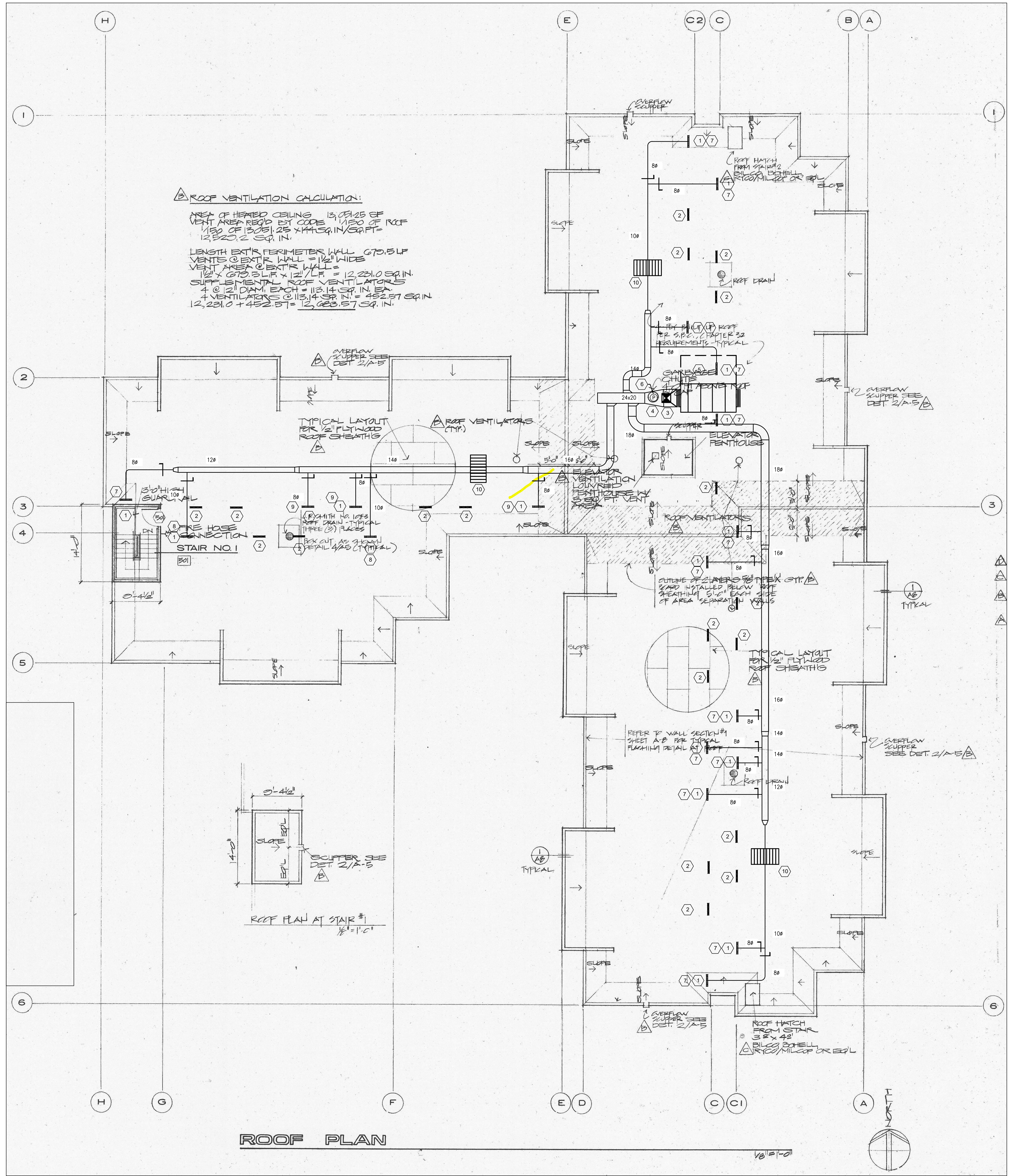
SHEET NOTES

- 1. BATHROOM EXHAUST SHAFT FROM BELOW. EXHAUST FULLY DUCTED FROM FAN TO ROOF. THREE OR FOUR DUCTS IN EACH SHAFT. SEE DETAIL 1, M2.0 FOR EXHAUST FITTING.
- 2. KITCHEN EXHAUST SHAFT FROM BELOW. EXHAUST FULLY DUCTED FROM HOOD TO ROOF. THREE OR FOUR DUCTS IN EACH SHAFT. SPRAY FOAM AROUND DUCT PENETRATION IN HOODS TO SEAL ENVELOPE.
- 3. EXISTING 20x20 OUTSIDE AIR SUPPLY DUCT DOWN TO CORRIDORS. FIELD CONNECT NEW INSULATED DUCTWORK TO EXISTING. PROVIDE NEW CURB FOR WEATHER-PROOFING.
- 4. CAP, SEAL, AND WEATHER-PROOF EXISTING GARBAGE CHUTE.
- 5. LOCATE ERV ON CURB, 14" ABOVE ROOF. MAINTAIN ACCESS CLEARANCE FOR MAINTENANCE. SEE DETAIL 2, M2.0 FOR EQUIPMENT MOUNTING.
- 6. DUCT PRESSURE SENSOR.
- 7. BALANCE TOTAL SHAFT FLOW = 180 CFM.
- 8. BALANCE TOTAL SHAFT FLOW = 220 CFM.
- 9. BALANCE TOTAL SHAFT FLOW = 135 CFM.
- 10. PROVIDE AND INSTALL CLIMB-OVER STAIRS WITH HAND-RAIL FOR ACCESS OVER DUCTWORK. SUBMIT DESIGN FOR SEATTLE HOUSING AUTHORITY REVIEW.

ROOF VENTILATION CALCULATION:

AREA OF HEATED CEILING = 13,031.25 SF
VENT AREA REQ'D BY CODE = 1/150 OF ROOF
1/50 OF 13,031.25 X 44.5 SQ. IN. / SQ. FT. = 13,220.2 SQ. IN.

LENGTH EXTERIOR PERIMETER WALL = 670.5 LF
VENTS @ EXTERIOR WALL = 1/2" WIDE
VENT AREA @ EXTERIOR WALL = 1/2" X 670.5 LF X 12" / LF = 12,231.0 SQ. IN.
SUPPLEMENTAL ROOF VENTILATORS
4 @ 12" DIAM. EACH = 115.14 SQ. IN. EA.
4 VENTILATORS @ 13.14 SQ. IN. = 482.57 SQ. IN.
12,231.0 + 482.57 = 12,713.57 SQ. IN.



ROOF PLAN

PROJECT
Pinehurst Court Renovation
12702 15th Avenue NE
Seattle, WA 98125



DATE
03/09/2021
REVISIONS

SHEET TITLE
Roof Plan - Mechanical

SHEET NO.
M-1.0