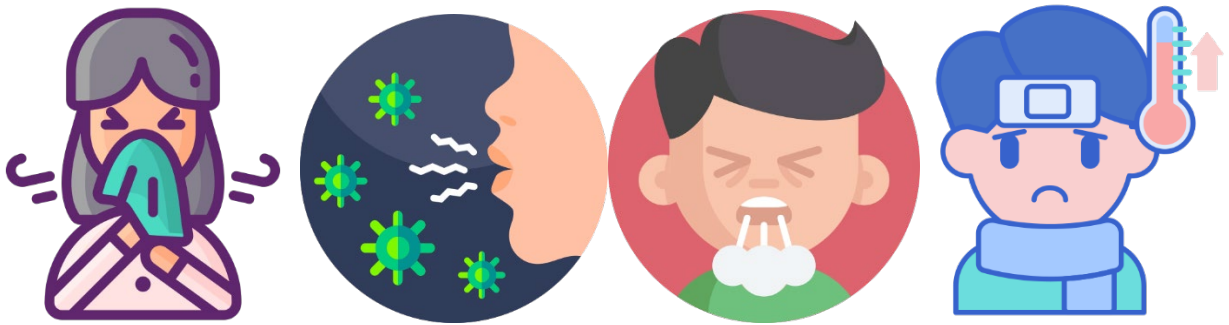


Simplified Chinese - 简体中文



使用该告示以明示来访者您所住的单元是否有人患病。

Use this sign to tell visitors if anyone in your unit is sick.



您家中是否有人患病（如出现频繁咳嗽、发烧、或者呼吸急促等症状）？或者是否有人因可能患上新型冠状病毒 (COVID-19) 而被隔离？

Is anybody in your household ill with an active cough, fever or shortness of breath, or is anyone self-isolating (quarantined) due to possible exposure to COVID-19?

是
YES

否
NO