

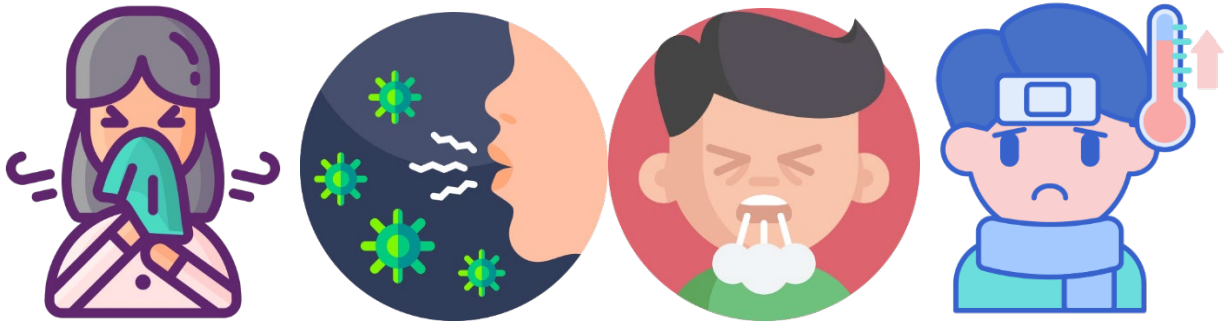
## Somali - Soomaali



Waxa aad isticmaashaa calaamadan si aad ugu sheegto booqdayaasha hadii cid kamid ah gurigaagu uu xanuunsanayo.

---

Use this sign to tell visitors if anyone in your unit is sick.



**Cid kamid ah qoyskaaga miyuu qabaa xanuun sida qufac, xumad ama neefta oo ku adkaata, ama qofna miyuu ka dhac baxay dadka (go'doomin) maadaama oo laga yaabo inuu qabo COVID-19?**

---

Is anybody in your household ill with an active cough, fever or shortness of breath, or is anyone self-isolating (quarantined) due to possible exposure to COVID-19?

**Haa**  
**YES**

**Maya**  
**NO**