



Yesler Terrace Redevelopment Feedback Summary

Open House | July 31, 2008

On July 31, 2008 a public Open House was held for residents of Yesler Terrace in the Jesse Epstein Building.

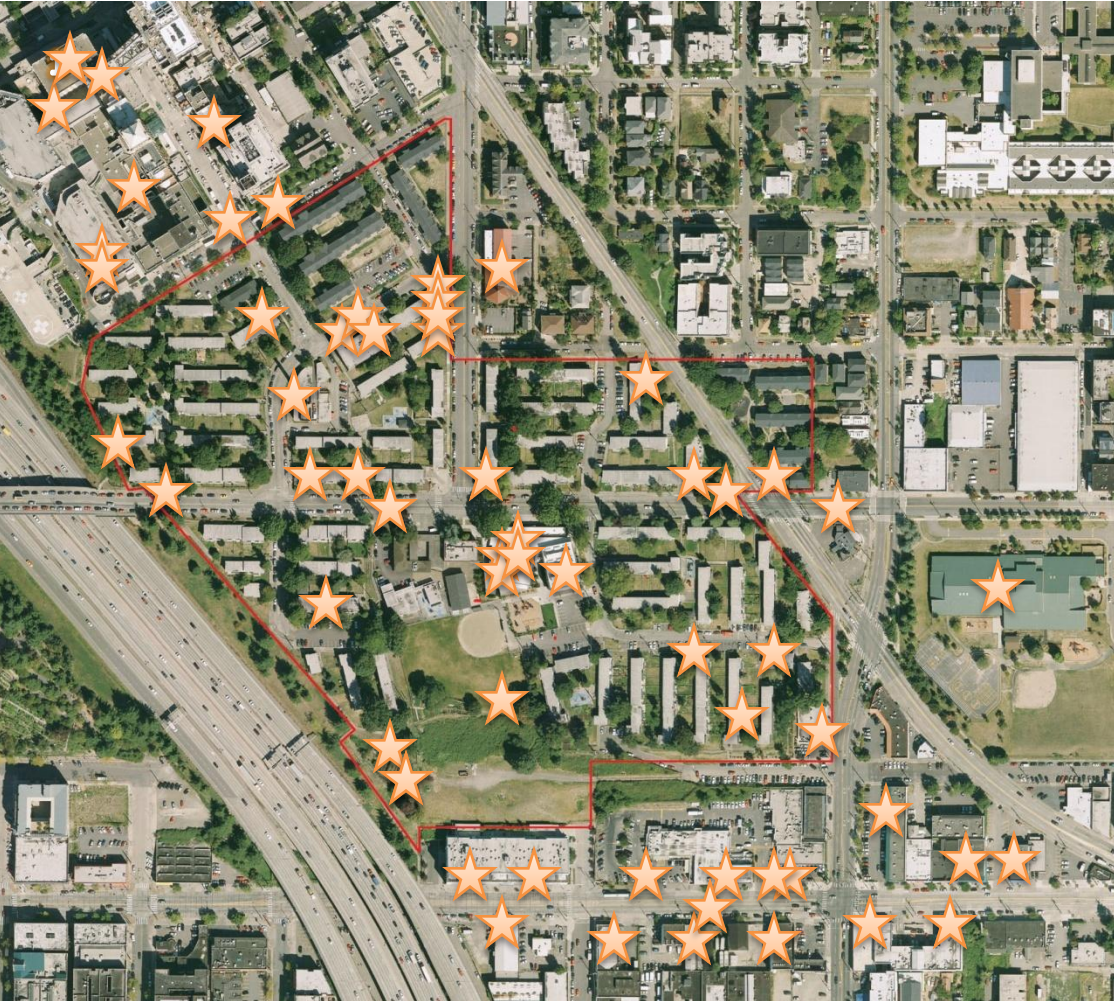
The general subject was community priorities for guiding redevelopment. Four key questions were asked:

- 1) What are your favorite places in and around Yesler Terrace? Why?
- 2) What are your least favorite places in Yesler Terrace?
- 3) What are your favorite things to do in Yesler Terrace?
- 4) The ideal future of Yesler Terrace will include _____.

Pages 2-5 include a combined summary of resident feedback. In pages 6-23 the feedback is organized according to language group table.

Summary

1. What are your favorite places in and around Yesler Terrace? Why?
- 1. Harborview – convenient for doctor visits and for a great view of Seattle.
 - 2. Convenient bus access to downtown and Capitol Hill.
 - 3. Private gardens.
 - 4. Staircase to International District – shops with traditional foods, clothing, beauty shops and restaurants.
 - 5. Community Center and playfields for children.
 - 6. Pea Patch – good place walk around and chat with neighbors.



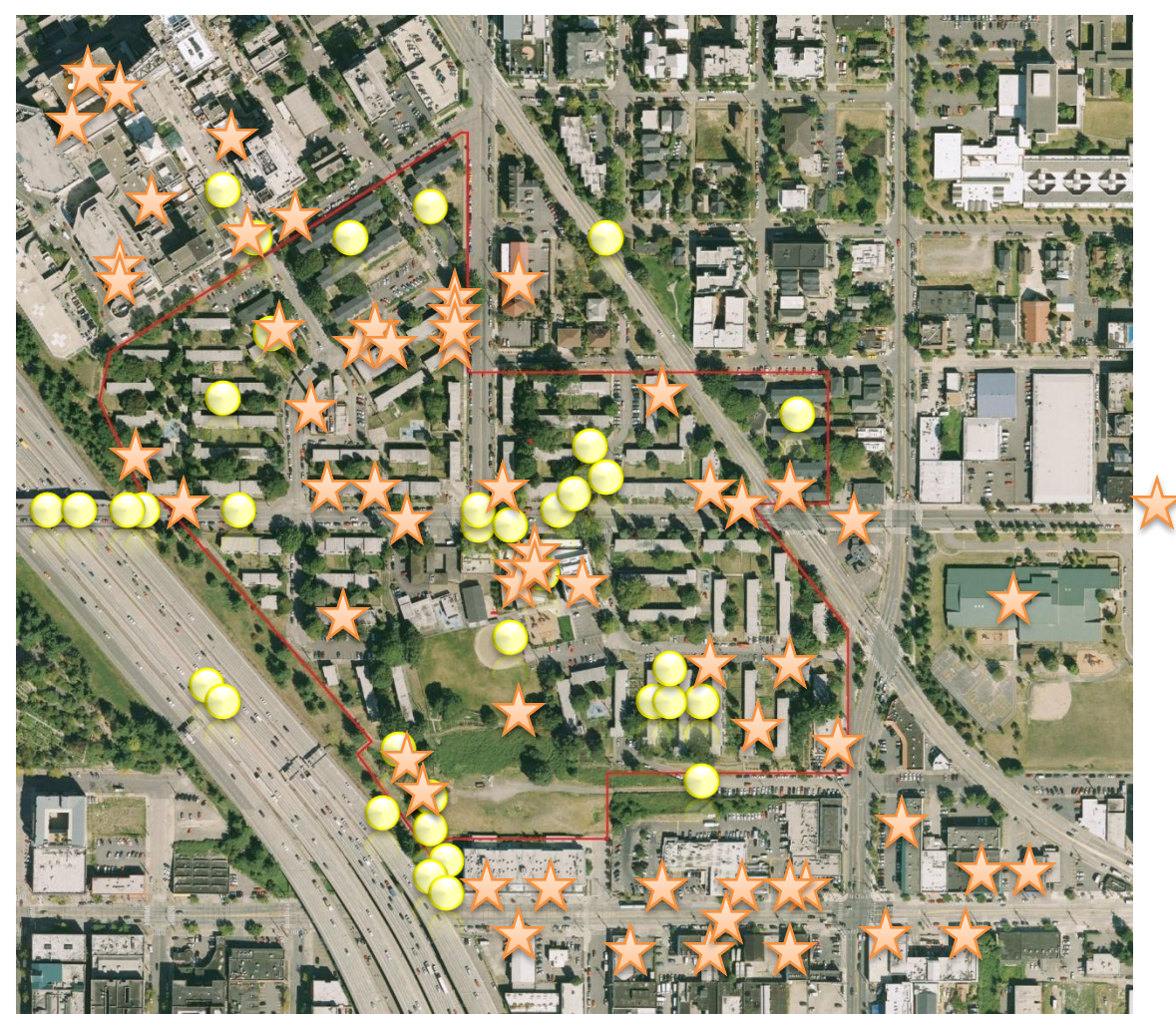
Summary

2. What are your least favorite places in Yesler Terrace?
 1. I-5 – Noisy and dirty.
 2. Staircase connecting to Jackson Street – drug trafficking, muggings, illegal activity.
 3. Harborview guests parking in resident spots, lack of guest parking.
 4. Bridge on Yesler – unsafe, cars broken into and windows broken.
 5. Violence around Washington Street and the borders of Yesler Terrace.
 6. Intersections with little pedestrian visibility.

Summary

Combined view of Questions 1 and 2.

1. What are your favorite places in and around Yesler Terrace? Why?
2. What are your least favorite places in Yesler Terrace?



Summary

3. What are your favorite things to do in Yesler Terrace?
 1. Gardening – growing vegetables and flowers.
 2. Walking around the neighborhood.
 3. Walking to a viewpoint of the city.
 4. Visiting with neighbors and watching neighborhood children grow up.
 5. Catch the bus to visit other parts of the city.
 6. Visit the International District to go shopping and to restaurants.

4. The ideal future of Yesler Terrace will include _____.
 1. Community gardens, a public flower garden.
 2. Safe streets for all ages to walk around – more lighting.
 3. Trails for walk and biking.
 4. Affordable childcare center.
 5. Public (interactive) art. (Fountain).
 6. Fitness center with a swimming pool.
 7. Shopping center:
 - Grocery store with traditional ethnic foods
 - Post Office
 - Library
 - Cleaner
 8. Community space for:
 - Cultural activity/celebration.
 - Group prayer.
 - Theatre performances and cinema.
 - Old people to meet, talk and socialize
 9. More livable floor plan layout with amenities in individual units.
 10. Job offerings for residents and summer jobs for kids.
 11. Grouped housing for old people.
 12. Handicap access.
 13. Preschool and Kindergarten.
 14. Parking enforcement and more parking for units with space for visitors.

