



## Appendix K - WATER RESOURCES and UTILITIES TABLES



## Appendix K - WATER RESOURCES and UTILITIES TABLES

**Table 1**  
**STORMWATER MODELING COVERAGE ASSUMPTIONS**

	<b>Preferred Alternative DEIS Site</b>	<b>Preferred Alternative East of 12<sup>th</sup> Sector</b>
	Perv./Imperv.	Perv./Imperv.
<b>Open Space</b>	50%/50%	50%/50%
<b>Private Access Roads</b>	0%/100%	0%/100%
<b>Sidewalk Imp. Only</b>	30%/70%	50%/50%
<b>Half Street Imp.</b>	33%/67%	0%/100%
<b>Full Street Imp.</b>	22%-33%/67%-78%	n/a
	Green Roof/Imperv.	Green Roof/Imperv.
<b>Buildings</b>	50%/50%	0%/100%

*Source: SvR Design Company, 2011.*

**Table 2**  
STORMWATER MODELING SITE COVERAGE AREAS – PREFERRED ALTERNATIVE

			Data Provided By CollinsWoerman						Input to Coverage Spreadsheet		
Sector	Total Sector Area (sf) <sup>1</sup>	Total Right-of-Way Improvements (sf) <sup>1</sup>	Public Parks (sf)	Office (sf)	Existing Buildings (sf)	Housing (sf)	Access Roads (sf)	Other Open Space (sf)	Total Buildings (ac) <sup>2</sup>	Total Private Roads (ac) <sup>3</sup>	Total Open Space (ac) <sup>4</sup>
NW Sector	557,900	136,900	51,300	61,100	8,500	127,400	22,800	149,900	4.52	0.52	4.62
NE Sector	194,400	61,200	21,000	0	0	65,600	500	46,100	1.51	0.01	1.54
SE Sector	313,700	77,900	36,600	0	0	95,200	14,800	89,200	2.19	0.34	2.89
SW Sector	392,600	52,000	31,300	0	0	118,700	20,500	170,100	2.72	0.47	4.62
EOB Sector	93,900	17,400	1,800	0	0	40,400	700	33,600	0.93	0.02	0.81
<b>DEIS Site</b>	<b>1,152,500</b>	<b>345,400</b>	<b>142,000</b>	<b>61,000</b>	<b>8,500</b>	<b>447,300</b>	<b>59,300</b>	<b>488,900</b>	<b>11.87</b>	<b>1.36</b>	<b>14.48</b>
EOT Sector <sup>5</sup>	91,100	12,000	0	0	0	33,200	4,100	41,800	0.76	0.09	0.96
<b>Total Site</b>	<b>1,643,600</b>	<b>357,400</b>	<b>142,000</b>	<b>61,100</b>	<b>8,500</b>	<b>480,500</b>	<b>63,400</b>	<b>530,700</b>	<b>12.63</b>	<b>1.46</b>	<b>15.44</b>

**Source: SvR Design Company, 2011.**

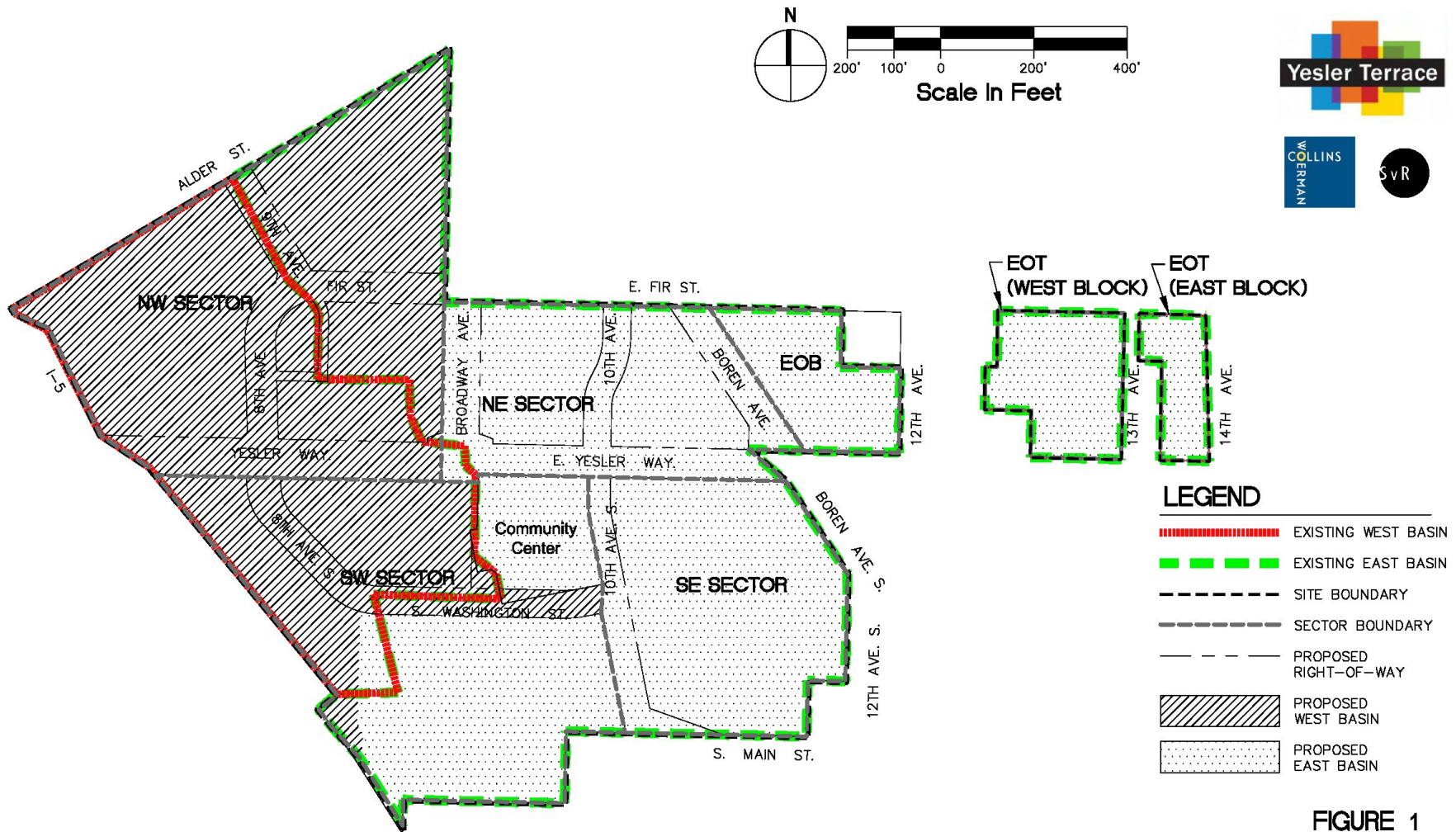
1. Only includes section of roadway being improved. Includes offsite improvements (estimated by SvR).

2. Includes Offices and Housing.

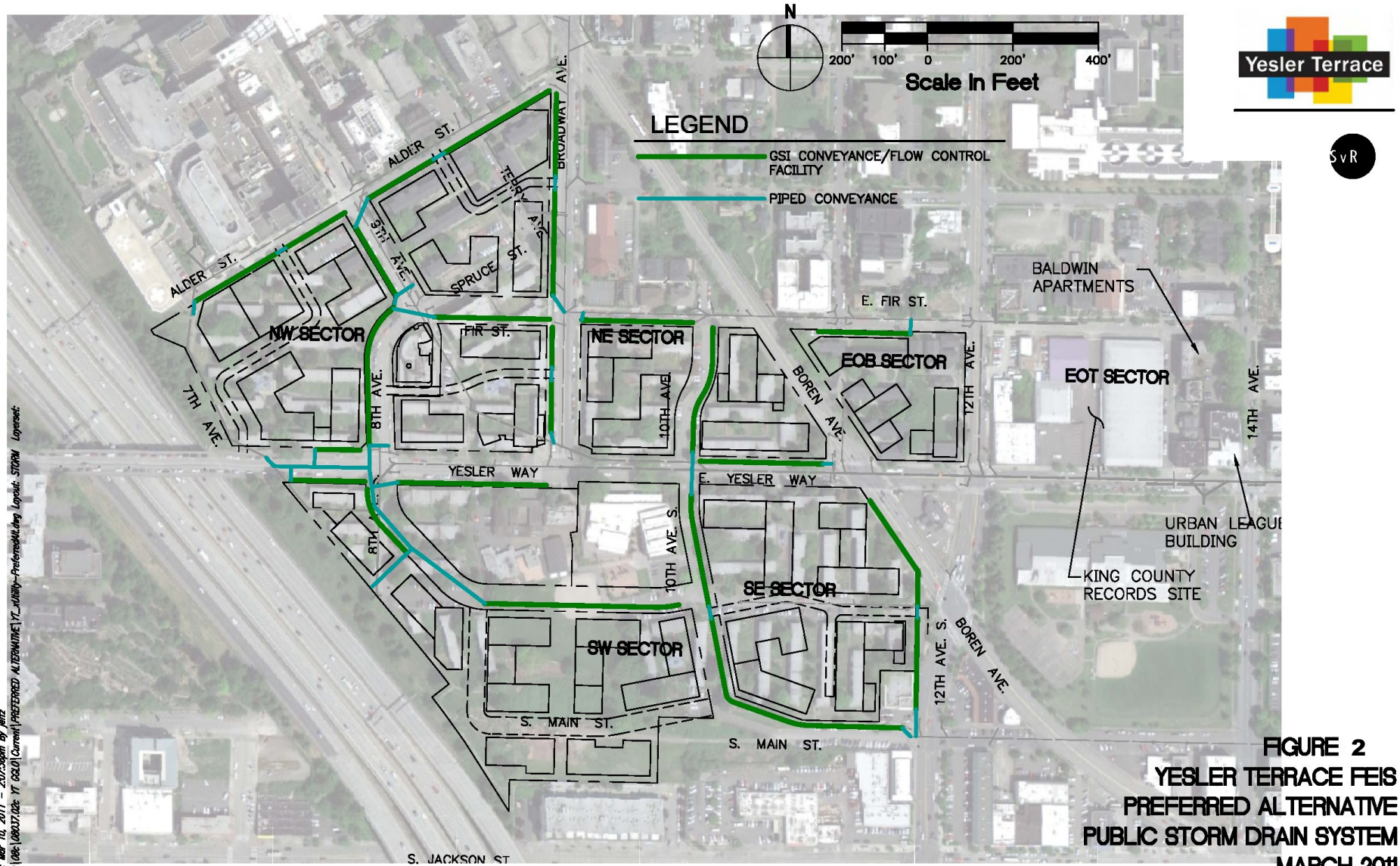
3. Includes Access Roads from computer aided design(CAD), as well as other paved areas.

4. Includes Parks and all other area of the sector not counted as Buildings, Right-of-Way or Access Roads.

5. Does not include east block of East of 12<sup>th</sup> Sector, since proposed improvements do not require any new or replaced impervious surface.



**FIGURE 1**  
**YESLER TERRACE**  
**PREFERRED ALTERNATIVE**  
**SITE BOUNDARY AND BASIN DELINEATION**  
**MARCH 2011**

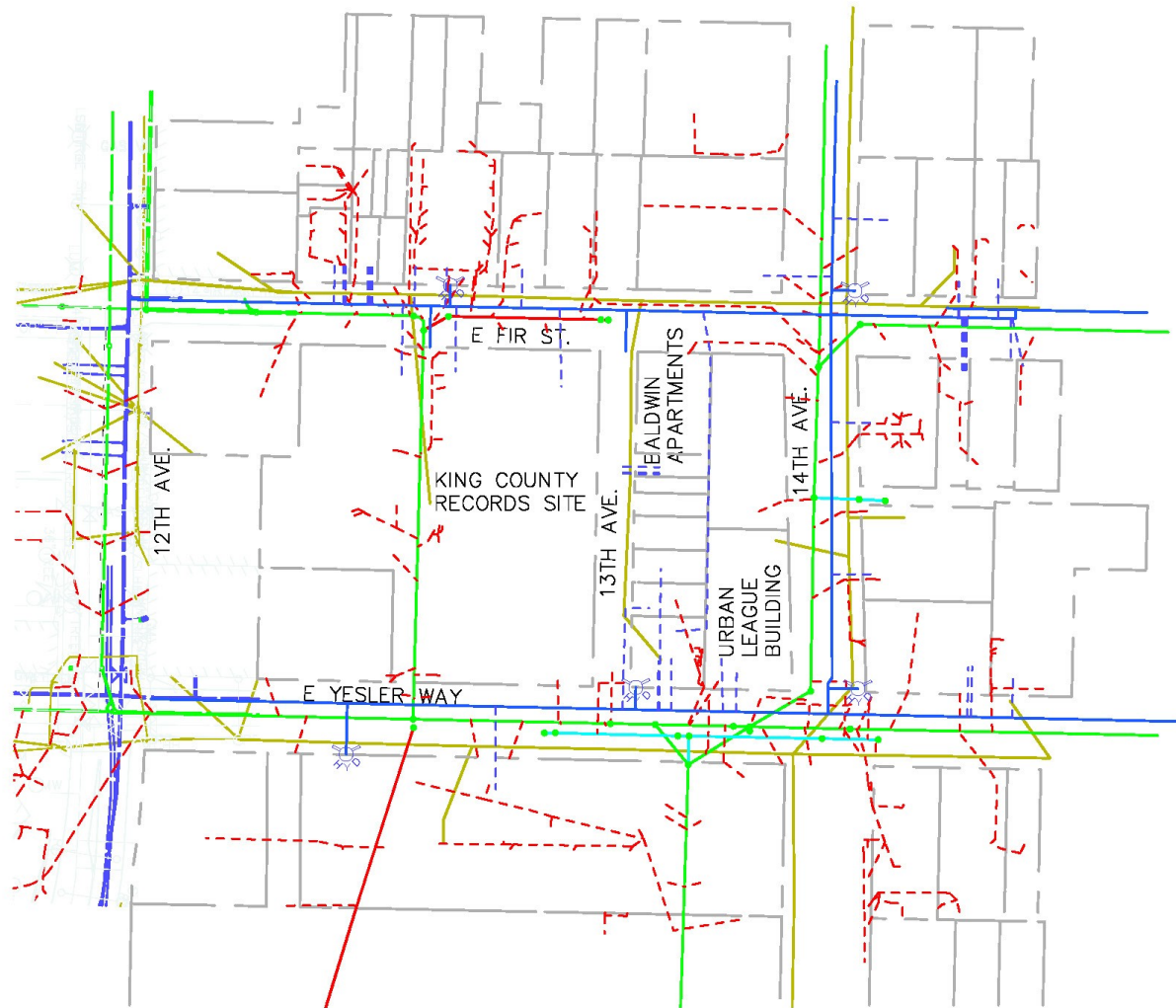


**FIGURE 2**  
**YESLER TERRACE FEIS**  
**PREFERRED ALTERNATIVE**  
**PUBLIC STORM DRAIN SYSTEM**  
**MARCH 2011**





100' 50' 0 100' 200'  
Scale In Feet



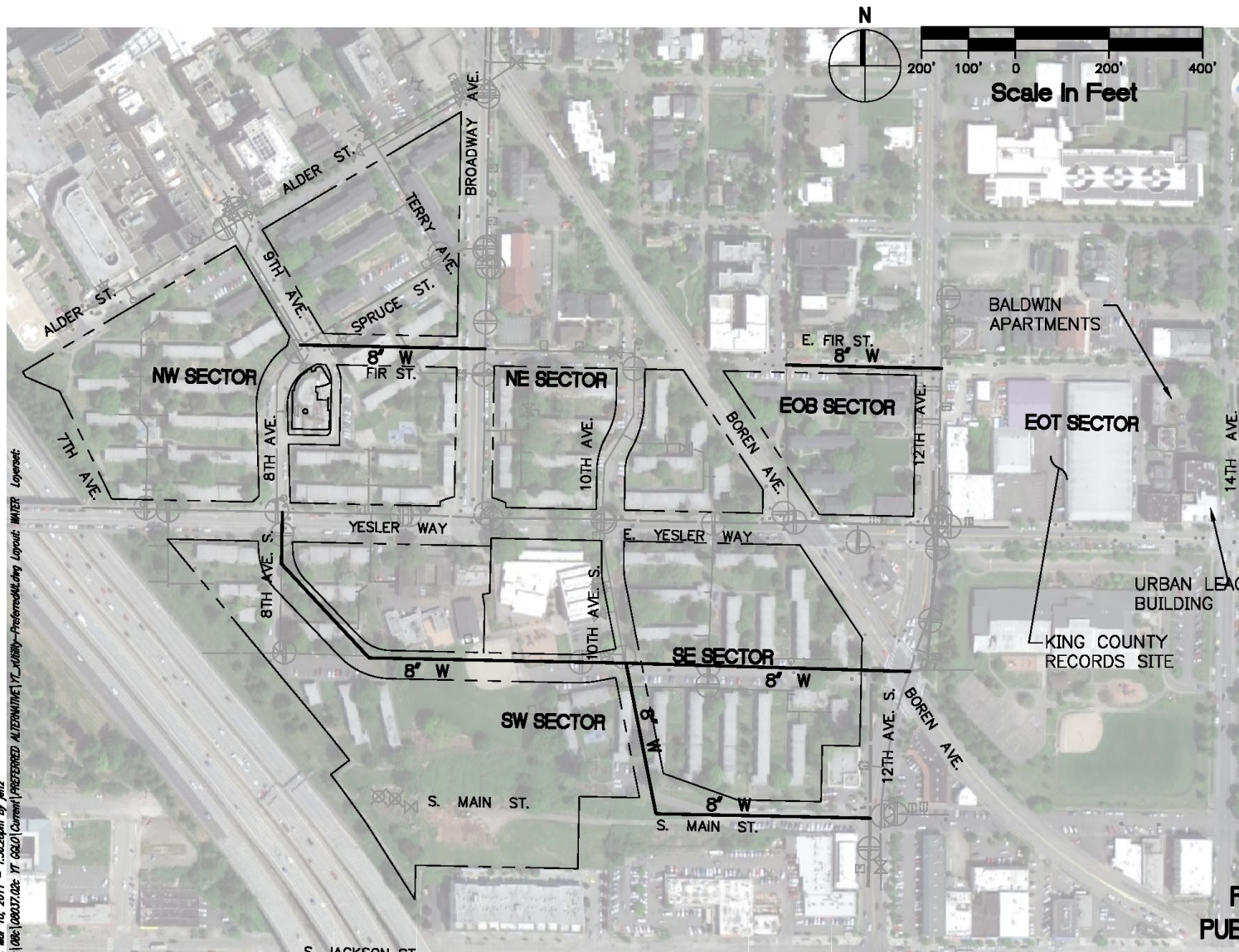
### LEGEND

- WATERMAIN
- - - WATER SERVICE
- ⊗ FIRE HYDRANT
- PIPE STORM DRAIN (PSD)  
(CMP - CORRUGATED METAL  
PIPE DETENTION PIPE)
- PIPE SEWER COMBINED (PS)
- PIPE SEWER SANITARY (PSS)
- - - SIDE SEWER
- SCL

NOTE: UTILITY INFORMATION OBTAINED FROM GIS  
FOR EOT.

**Figure 3**  
**Existing Utility East of 12th**  
**March 2011**

Plotdate: Mar 10, 2011 - 1:58:28pm By: jllfz  
 File: G:\06\0607102-11\65101 Current\Preferred Alternative\Y\_T Utility-Preferred\Map\Long Layout: WATER Layout.dwg



# LEGEND

8" W NEW WATER MAIN

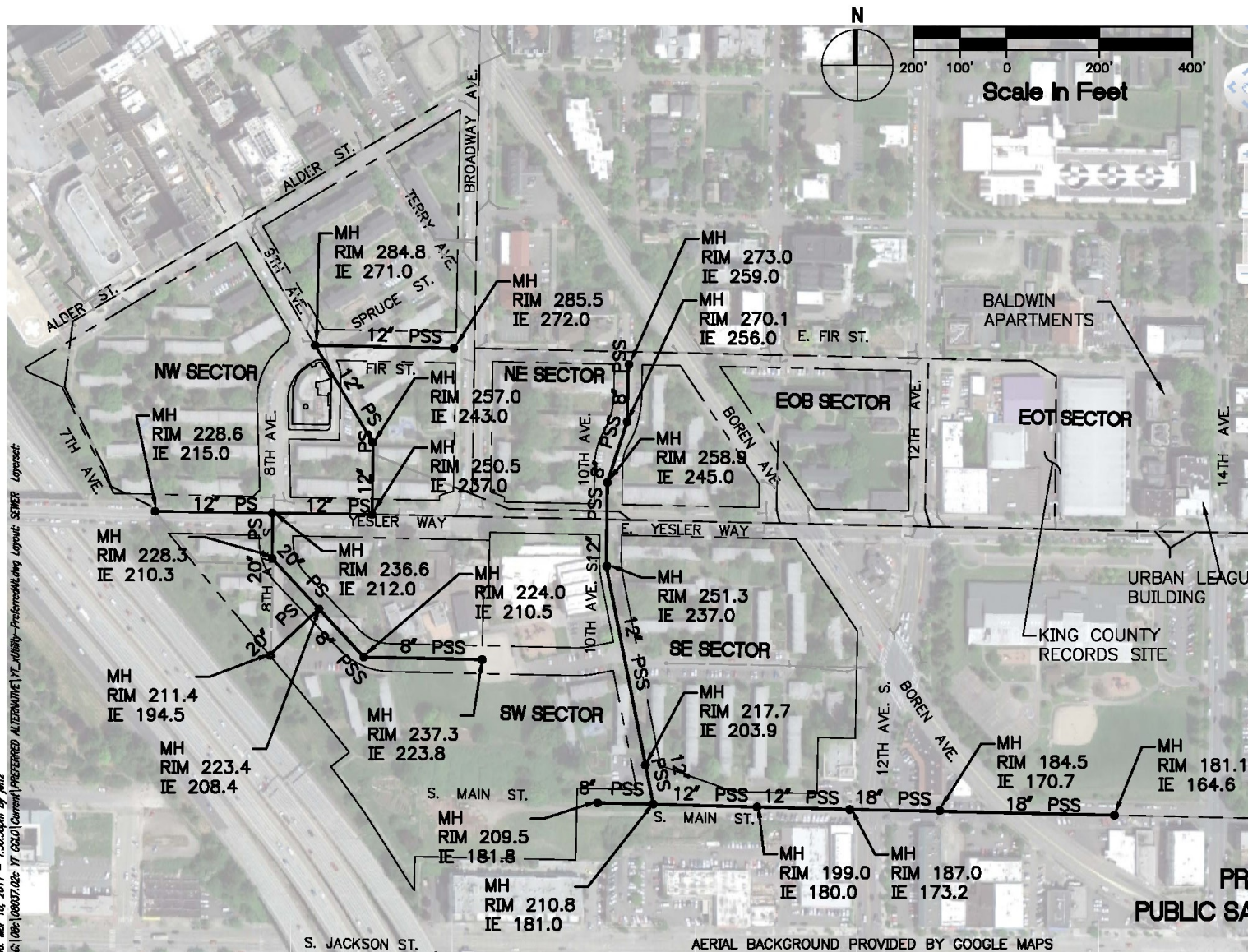
# NOTES

1. System sized for domestic water and fire hydrant flow.

**FIGURE 4**  
**YESLER TERRACE FEIS**  
**PREFERRED ALTERNATIVE**  
**PUBLIC WATER MAIN SYSTEM**  
**MARCH 2011**



Plot Date: Mar 10, 2011 - 1:52:38pm By: jllfz  
 File: G:\06\060702-11\GIS\Current\Preferred\ALTERNATIVE\Yesler-Terrace\Long Layout\_SSEWER Layout.dwg



AERIAL BACKGROUND PROVIDED BY GOOGLE MAPS



## LEGEND

---	EXISTING PS
PS	NEW PS
PSS	NEW PSS
•	NEW MH

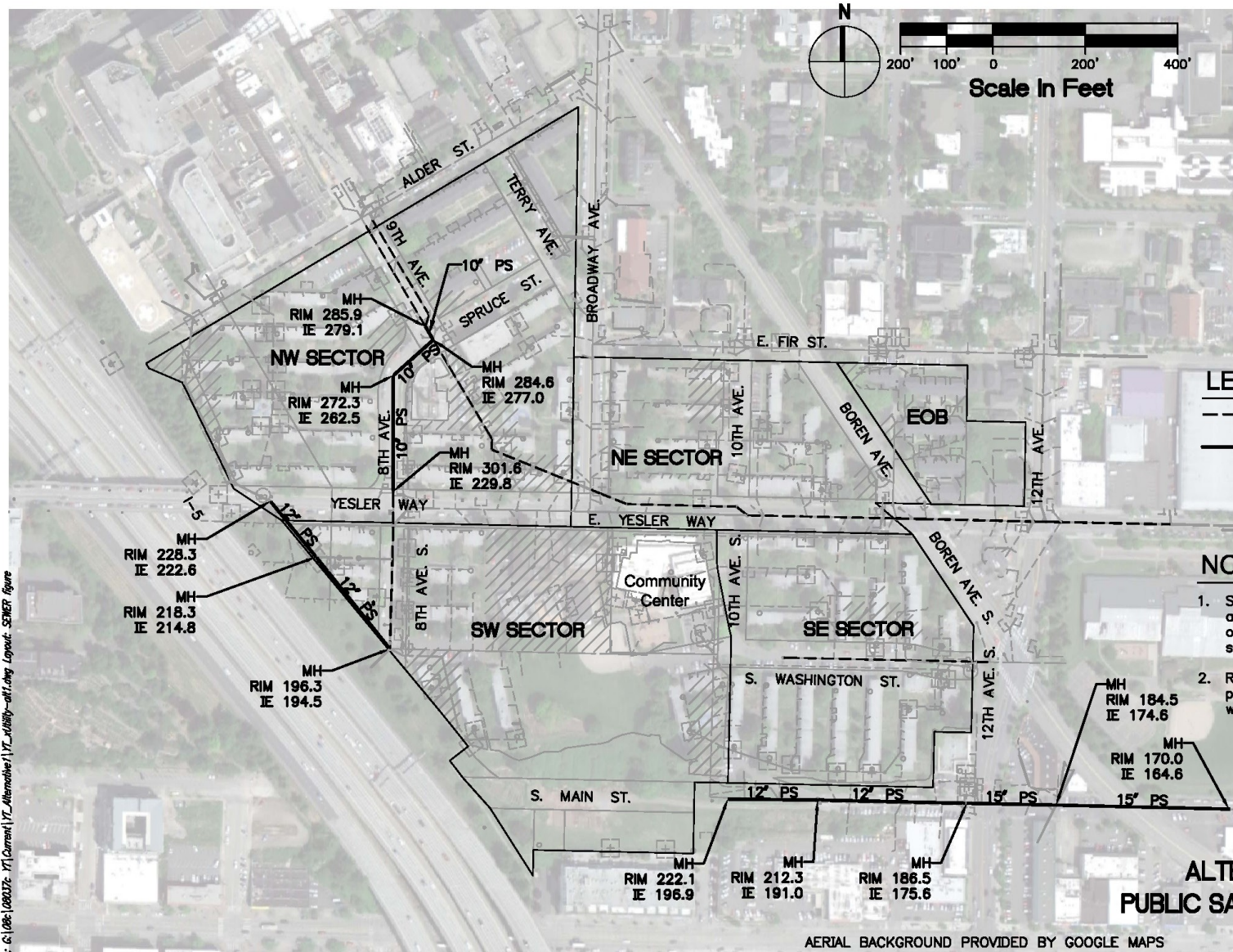
## NOTES

1. Study assumes a traditional approach. No rainwater harvesting or gray water re-use included in study.
2. Rim's and IE's for planning purposes and subject to change with final design.

**FIGURE 5**  
**YESLER TERRACE FEIS**  
**PREFERRED ALTERNATIVE**  
**PUBLIC SANITARY SEWER SYSTEM**  
**MARCH 2011**



Plotdate: Mar 08, 2011 - 5:08:03pm By: jelfz  
 File: G:\06\080102-11\Current\11\Alternative\11\VT\_Alternative\11\VT\_Alternative.dwg Layout: SEWER Figure





Plotdate: Mar 08, 2011 - 5:03:09pm By: jefz  
 File: G:\06\060126\11\Current\11\Alternatives\11\VT\_Alt02\11\Long Layout: SEWER Figure Layered

