

Fire Alarm Damper Is Not Controlled or monitored by the Fire Alarm System.

Fire Alarm Damper Is Not Controlled or monitored by the Fire Alarm System.

FIRE ALARM SYMBOL LEGEND

NOTE: ALL SYMBOLS SHOWN ARE TO BE USED ON THIS PROJECT

SYMBOL	QTY	MODEL NUMBER	DESCRIPTION	MOUNTING
FCP	1	5820XL	FIRE ALARM CONTROL PANEL	WALL-TOP @ 66"
	1	5815XL	SLC LOOP EXPANDER MODULE	
	1	BAT-12550	55 AH BATTERY (12 VOLT)	
FFT	1	SK-FFT	FIREMAN COMMUNICATION SYSTEM	WALL-TOP @ 66"
FS	2	FHSC-S	FIREMAN PHONE STORAGE	
	8	FFT-RHS	FIREMAN PHONE HANDSET	
FSA	0	5860	REMOTE ANNUNCIATOR, 80 CHARACTERS	WALL-TOP @ 66"
FSXX	21	5495	REMOTE POWER SUPPLY	WALL-TOP @ 66"
	44	NP7-12	7 AH BATTERY (12 VOLT)	
	24	SK-CONTROL	ADA ROOM SIGNAL MODULE	4 SQ
FP	37	FFT-FPJ	FIRE FIGHTERS PHONE JACK	SINGLE GANG
MX	12	SK-MONITOR	FIREPHONE CONTROL MODULE	4 SQ
	20	SK-DUCT	ADDRESSABLE - NON RELAY PHOTO DUCT DET.	FIELD VERIFY
	20	DST1	SAMPLING TUBES UP TO 1'	FIELD VERIFY
	14	ZA100Z	REMOTE INDICATOR	FIELD VERIFY
	101	SK-PHOTO	ADDRESSABLE SMOKE DETECTOR	
	101	B210LP	DETECTOR BASE	4 SQ OR 4/0 BOX
	04	SK-HEAT	ADDRESSABLE HEAT DETECTOR	
	04	B210LP	DETECTOR BASE	4 SQ OR 4/0 BOX
	02	SK-PULLDA	ADDRESSABLE MANUAL PULL STATION	SINGLE GANG
MM	10	SK-MONITOR	ADDRESSABLE MONITOR MODULE	4 SQ OR
DM	01	SK-MONITOR2	ADDRESSABLE DUAL MONITOR MODULE (FLOW/TPR)	4 SQ OR
CM	24	SK-CONTROL	ADDRESSABLE CONTROL MODULE	4 SQ OR
RM	33	SK-RELAY	ADDRESSABLE RELAY MODULE (ELEVATOR RECALL)	4 SQ OR
	6	P2R	MULTI-CANDELLA HORN/STROBE	2 GANG OR 4 SQUARE
	18	SR	MULTI-CANDELLA STROBE ONLY	2 GANG OR 4 SQUARE
	69	PC2R	MULTI-CANDELLA HORN/STROBE	2 GANG OR 4 SQUARE
	186	HR-LF	LOW FREQUENCY HORN	2 GANG OR 4 SQ
	34	P2HR-LF	HORN/STROBE - ADA SLEEPING AREAS	2 GANG OR 4 SQUARE
	6	P2HR-LF	HORN/STROBE - ADA LIVING ROOM/DEN	2 GANG OR 4 SQUARE
			WATER FLOW SWITCH	BY OTHERS
			VALVE TAMPER SWITCH	BY OTHERS
		DTK-120S2015A	120 VAC LINE SURGE PROTECTOR	FIELD VERIFY
		RJ31X	DTK-MRJ31XSCPWP RJ31X MODULAR IN/OUT SURGE PROTECTOR	FIELD VERIFY

ABBREVIATION	DESCRIPTION
E	EXISTING
G	WITH GUARD
P	PENDANT MOUNT
R	RESIDENTIAL (110V)
S	SOUNDER BASE
WP	WEATHER PROOF
EOL	END OF LINE RESISTOR
EOLR	END OF LINE RELAY
AWG	AMERICAN WIRE GAUGE
TWP	TWISTED PAIR
TWSP	TWISTED SHIELDED PAIR
FPFP	FIRE POWER LIMITED PLENUM
FPFR	FIRE POWER LIMITED RISER

SYMBOL	DESCRIPTION
(S)	DEVICE ADDRESS
(H)	OR D01
(L10001)	OR D01
(D or M)	INDICATES LOOP #
(#)	INDICATES RELAY OR MODULE #
(#16/2 TWP)	WIRE TYPE ABBREVIATED CONDUCTOR COUNT
(#)	WIRE SIZE
(#)	# OF CABLES IF MATED (ONLY 1 CABLE NEEDED)

GENERAL NOTES:

- THESE DRAWINGS ARE DIAGRAMMATIC. REFER TO THE ARCHITECTURAL DRAWINGS FOR EXACT DIMENSIONS.
- INSTALLATION SHALL COMPLY WITH NEC, NFPA 72 AND ALL OTHER APPLICABLE CODES AS REQUIRED BY THE LOCAL AUTHORITY HAVING JURISDICTION.
- WIRING DEPICTED ON THESE PLANS IS SCHEMATIC - ACTUAL WIRE LOCATIONS MAY DIFFER FROM THESE PLANS. WIRING SHALL BE PERFORMED AS ACTUAL BUILDING CONSTRUCTION CONDITIONS ALLOW AND TO MINIMIZE PENETRATIONS THROUGH AREA SEPARATION WALLS AND FIRE WALLS. THE USE OF A RACEWAY IS PERMITTED AS LONG AS NO 110V OR HIGHER VOLTAGE CABLES ARE IN THE SAME RACEWAY.
- FIRE RATINGS SHALL BE MAINTAINED FOR ALL PENETRATIONS THROUGH FIRE-RATED CONSTRUCTION.
- POWER FOR ALL FIRE ALARM PANELS AND FIRE ALARM POWER SUPPLIES MUST BE PROVIDED BY A DEDICATED AC BRANCH CIRCUIT. THE LOCATION OF THE BRANCH CIRCUIT BREAKER SHALL BE PERMANENTLY IDENTIFIED AT THE CONTROL UNIT AND SHALL HAVE A RED MARKING IN ACCORDANCE WITH NFPA 72.
- POWER-LIMITED AND NONPOWER-LIMITED CIRCUIT WIRING MUST REMAIN SEPARATED IN CABINET. ALL POWER-LIMITED CIRCUIT WIRING MUST REMAIN AT LEAST 0.25" AWAY FROM ANY NONPOWER-LIMITED CIRCUIT WIRING. FURTHERMORE, ALL POWER-LIMITED AND NONPOWER-LIMITED CIRCUIT WIRING MUST ENTER AND EXIT THE CABINET THROUGH DIFFERENT KNOCK OUTS AND/OR SEPARATE CONDUITS.
- WHEN UTILIZING CLASS "A" CIRCUITS, SEPARATE OUTGOING AND RETURN CONDUCTORS OF CLASS "A" CIRCUITS BY A MINIMUM OF 12" WHERE RUN VERTICALLY AND 48" WHERE RUN HORIZONTALLY.
- WHEN UTILIZING SHIELDED CABLE TIE SHIELDS THROUGH AND INSULATE AT EACH JUNCTION BOX. INSULATE AND TAPE BACK AT END.
- ALL FIRE ALARM CABLING SHALL BE ACCEPTABLE TO THE FIRE ALARM EQUIPMENT MANUFACTURER FOR THE INTENDED PURPOSE.
- SMOKE DETECTORS SHALL NOT BE INSTALLED UNTIL AFTER CONSTRUCTION CLEAN-UP IS COMPLETED AND FINAL.
- LOCATE SMOKE DETECTORS A MINIMUM OF THREE (3) FEET FROM MECHANICAL DIFFUSERS. WALL-MOUNTED SMOKE DETECTORS SHALL BE LOCATED A MINIMUM OF 4" AND A MAXIMUM OF 12" FROM CEILING. CEILING-MOUNTED SMOKE DETECTORS SHALL BE MOUNTED ON CEILINGS AND NOT ON THE BOTTOMS OF BEAMS OR JOISTS.
- PROVIDE SYNCHRONIZATION OF ALL VISUAL NOTIFICATION APPLIANCE CIRCUITS. PROVIDE ALL REQUIRED SYNC MODULES. PROVIDE A MULTI-SYNC MODE SLAVE CONNECTION BETWEEN ALL SYNC MODULES.
- VERIFY ALL FIELD SELECTABLE AUDIBILITY SETTINGS OF NOTIFICATION APPLIANCES WITH FIRE ALARM CONTRACTOR.
- UPON COMPLETION OF THE FIRE ALARM SYSTEM INSTALLATION AND PROGRAMMING, THE INSTALLING CONTRACTOR SHALL PERFORM FINAL TESTING OF THE ENTIRE SYSTEM, PER ALL APPLICABLE CODES, AND SHALL COORDINATE AND PERFORM A FINAL FIRE ALARM SYSTEM INSPECTION.
- PROVIDE OFF-SITE MONITORING AS REQUIRED BY THE INTERNATIONAL FIRE CODE, SECTION 907.15 AND THE LOCAL AUTHORITY HAVING JURISDICTION.
- INSTALLING CONTRACTOR SHALL, PHYSICALLY, LABEL ALL INITIATING DEVICES AND NOTIFICATION APPLIANCE CIRCUIT END OF LINE (WHEN WIRING CLASS "B"). THESE LABELS SHALL BE IN PLACE PRIOR TO START-UP AND TESTING.

DATE	08/07/2017
REVISION	RECORD DRAWINGS
DESCRIPTION	

Johnson Controls
 22745 29th Dr. SE Bothell, WA 98021
 Main - 425/398-6900 Fax: 425/398-6955
 Electrical Contractor # JOHNCSIC366BZ

HOA MAI GARDENS
 221 10th AVENUE SOUTH
 SEATTLE, WA
 FA PLAN - PARKING L0

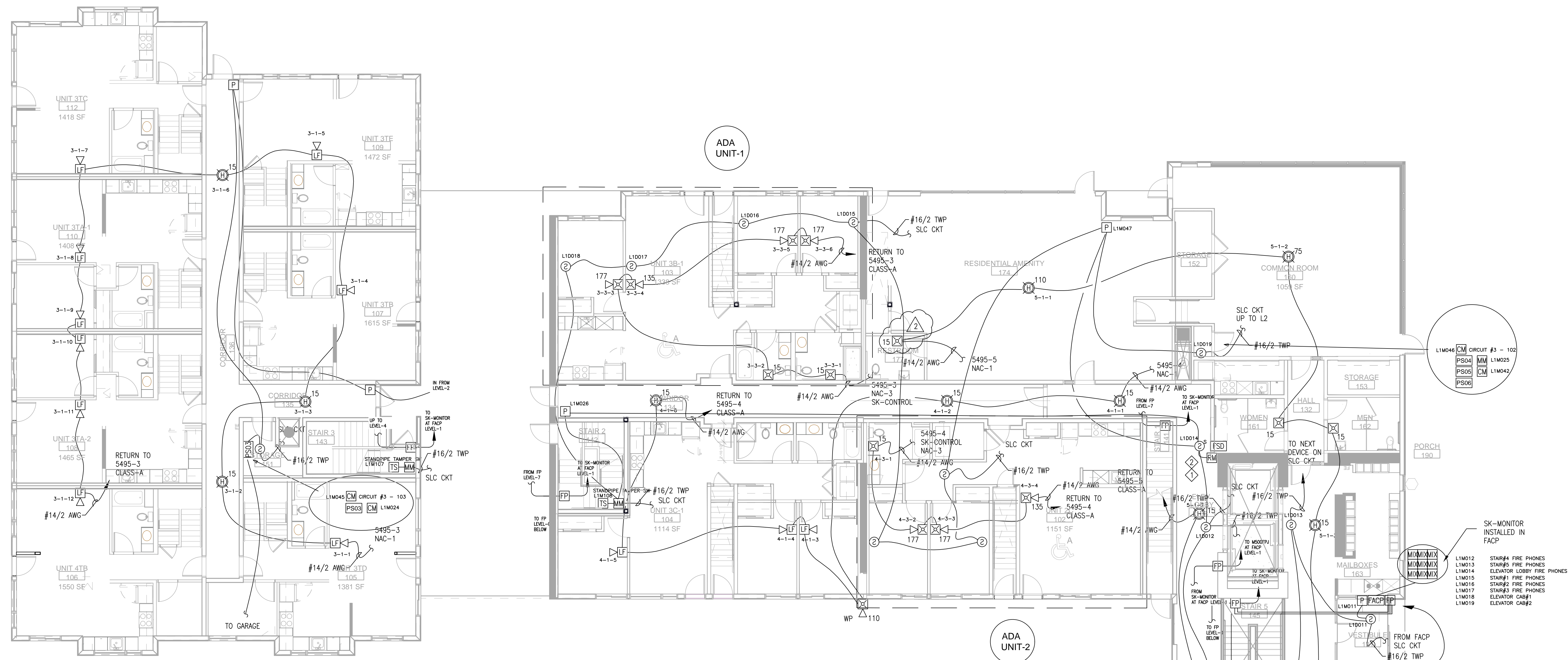
PERMIT#: 6534301

DRAWN	ELM
CHECKED	JRM
DATE	02/22/16
REVISION	0
SCALE	1/8"=1'-0"

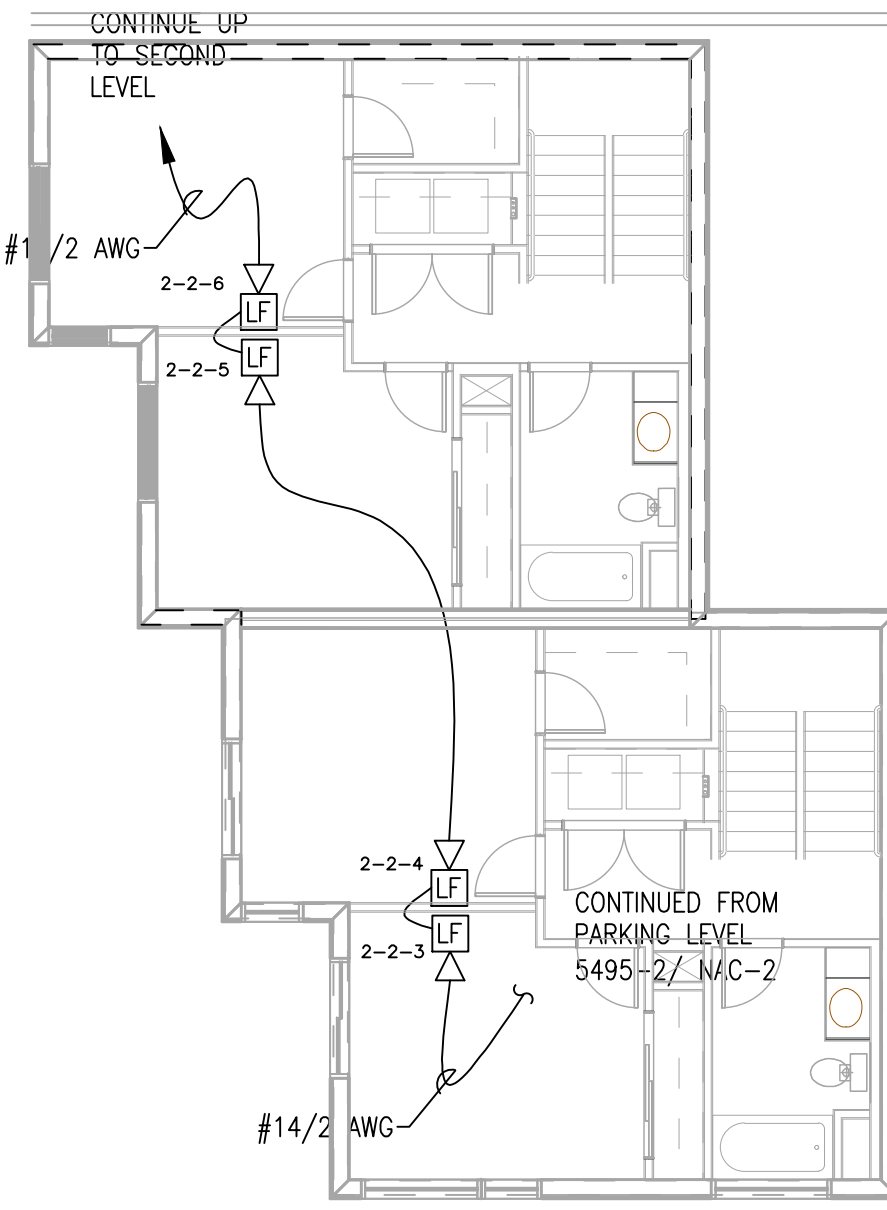
FA-1

RECORD DRAWINGS

Edward L. Moody
 NRCET Level IV
 Fire Alarm Systems
 Certificate # 84717
 Expires: August 2017
 Reviewed: 02/22/16
 Signed: Edward L. Moody



LEVEL 1
FIRE ALARM PLAN
SCALE: 1/8"=1'-0"



OPERATIONS MATRIX	
FIRE ALARM INPUT	
SMOKE DETECTORS (SPOT OR BEAM)	●
HEAT DETECTORS	●
DUCT DETECTORS	●
PULL STATIONS	●
PRIMARY RECALL FLR, ELEV LOBBY SMOKE DET	●
ALTERNATE RECALL FLR, ELEV LOBBY SMOKE DET	●
TOP OF ELEV SHAFT SMOKE DET	●
ELEVATOR EQUIPMENT ROOM SMOKE DET	●
ELEVATOR EQUIPMENT ROOM HEAT DET	●
TOP OF ELEV SHAFT HEAT DET	●
WATERFLOW SWITCHES	●
VALVE SUPERVISORY SWITCHES	●
KITCHEN HOOD	●
FIRE ALARM AC POWER FAIL	●
FIRE ALARM LOW BATTERY	●
OPEN CIRCUIT	●
GROUND FAULT	●
NAC SHORT CIRCUIT	●
LOSS OF AC TO BUILDING	●

REVISION	DESCRIPTION	DATE
1	RECORD DRAWING	08/07/2017

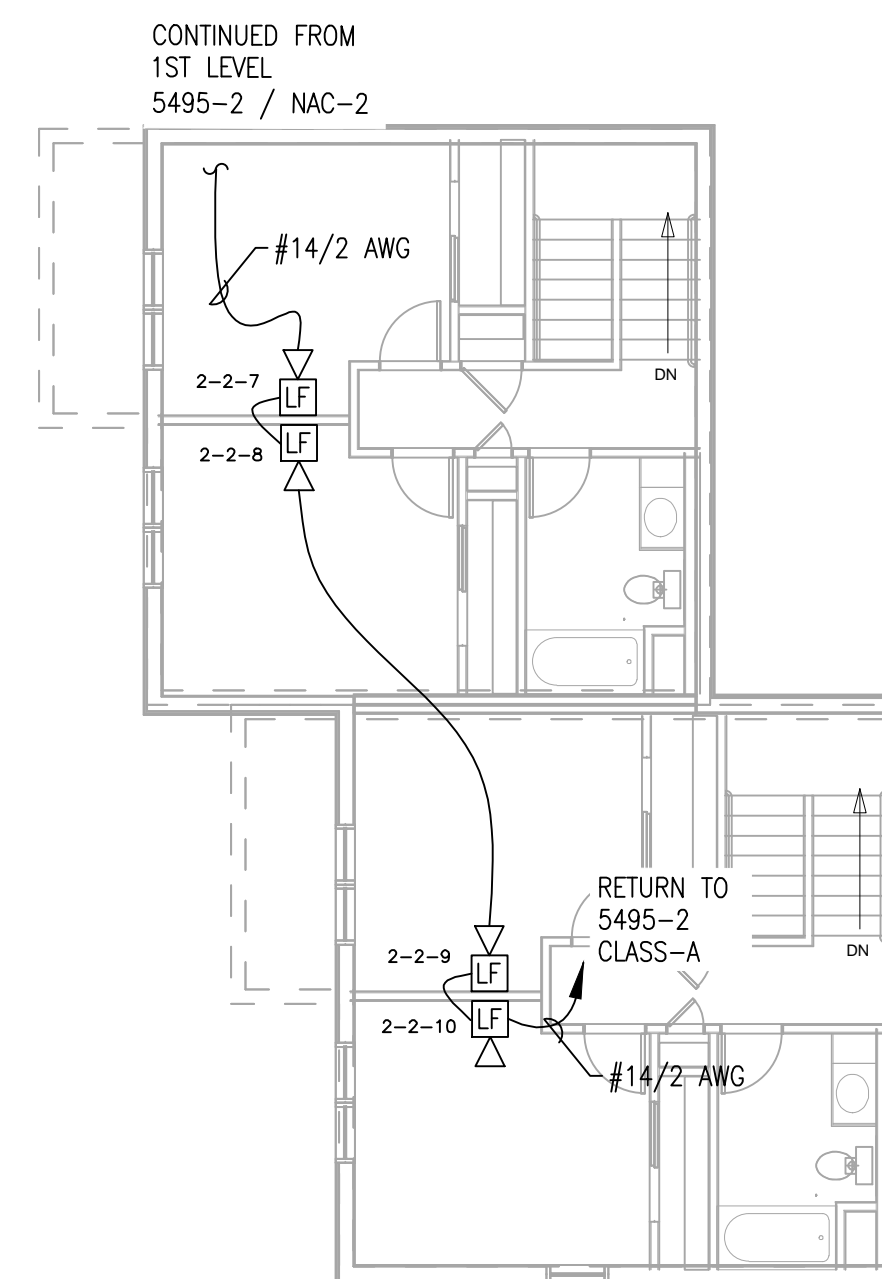
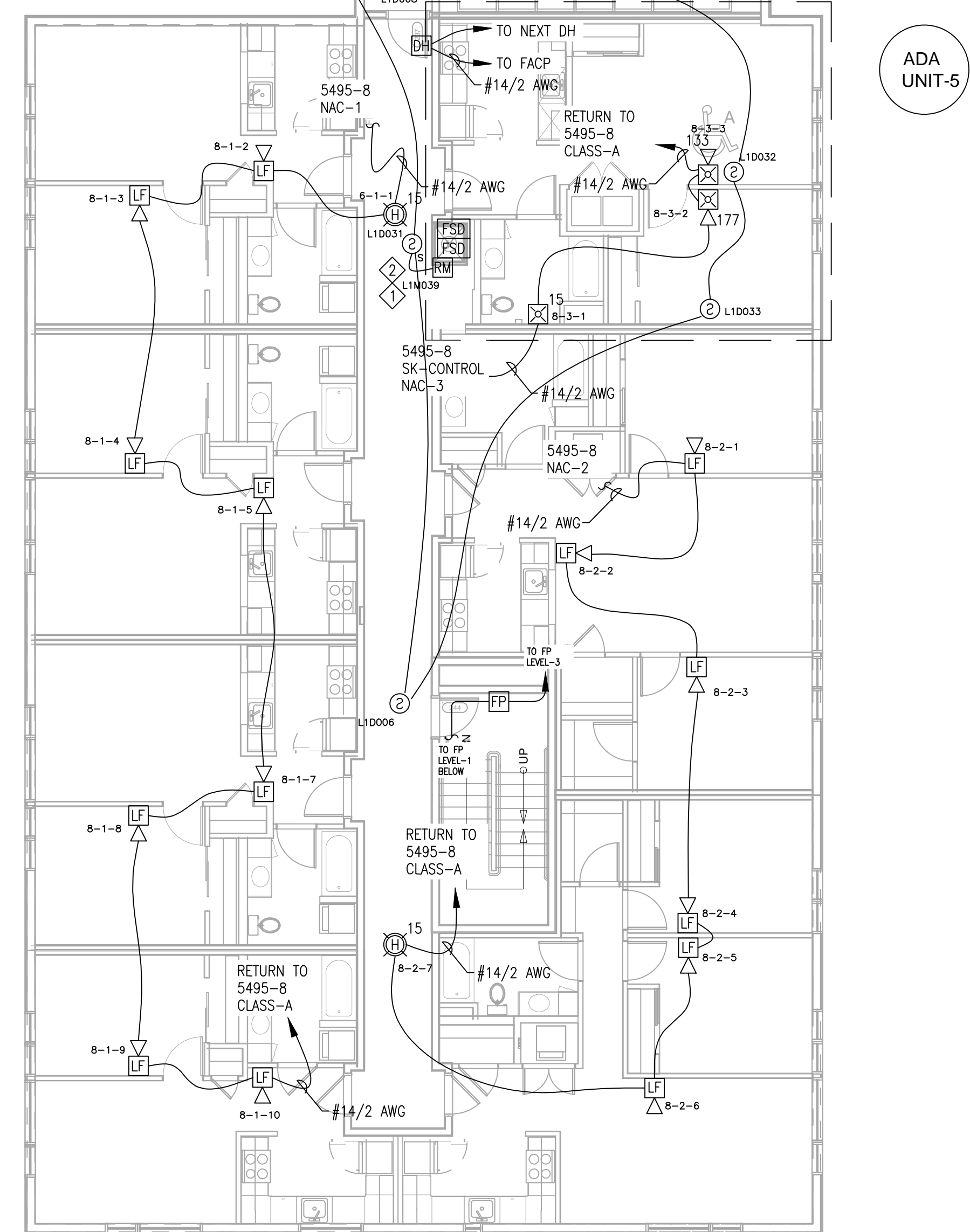
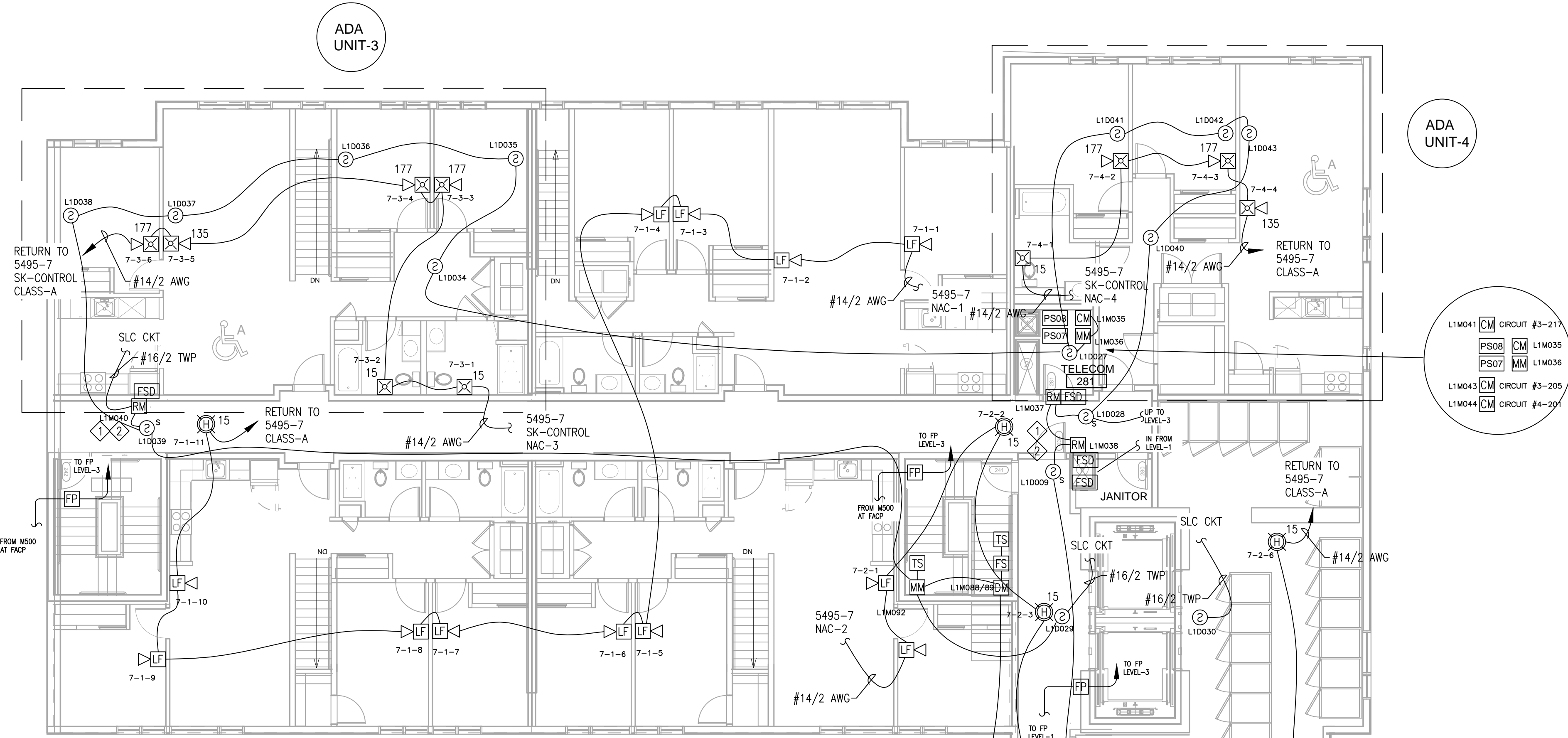
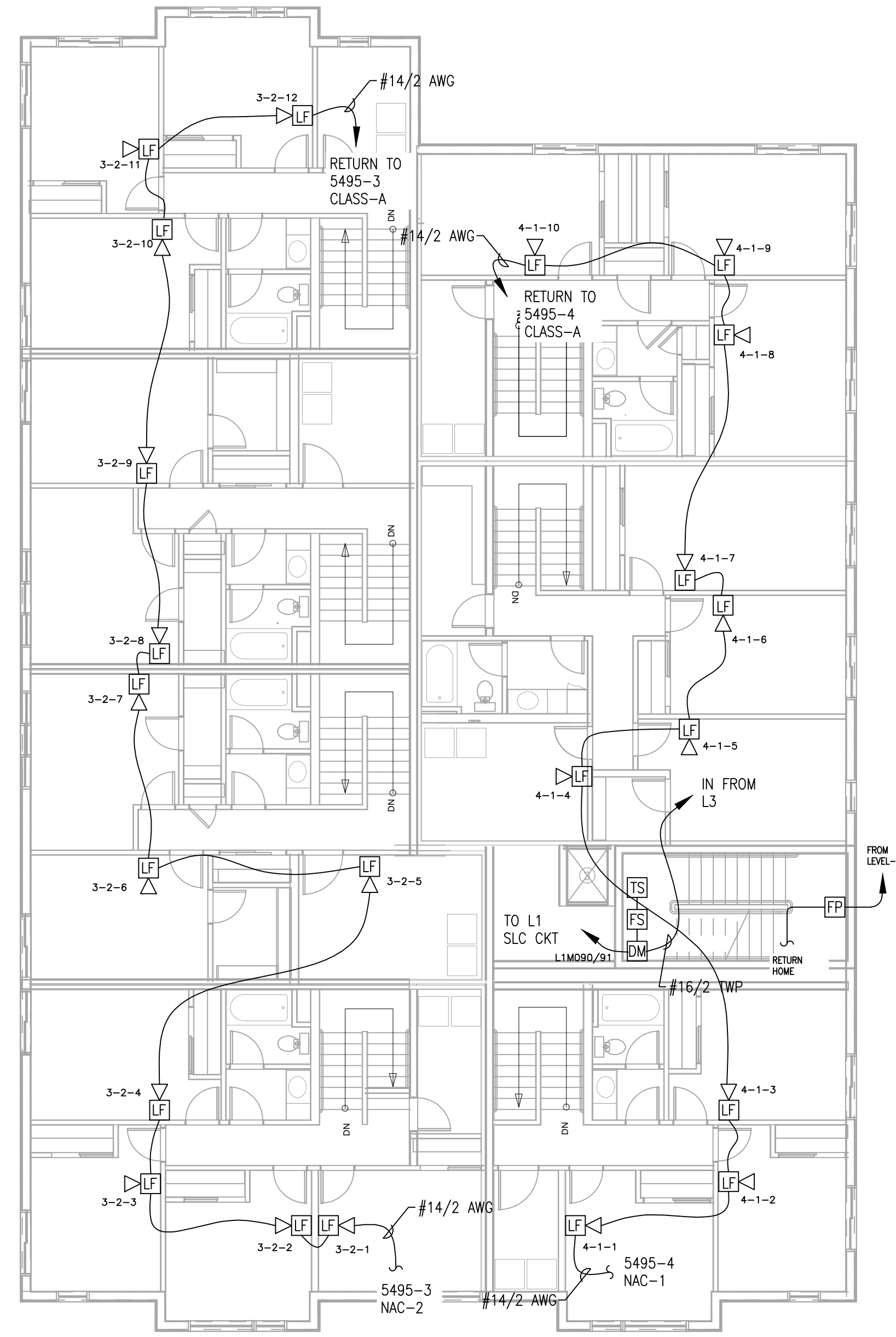
Johnson Controls
 22745 29th Dr. SE Bothell, WA 98021
 Main: 425/398-6900 Fax: 425/398-6955
 Electrical Contractor # JOHNSCI366BZ

HOA MAI GARDENS
 221 10th AVENUE SOUTH
 SEATTLE, WA
 FA PLAN LEVEL-1

RECORD DRAWINGS

Edward L. Moody
 NICEET Level IV
 Fire Alarm Systems
 Certificate # 94717
 Expires: August 2017
 Reviewed: 02/22/16
 Signed: Edward L. Moody

DRAWN	ELM
CHECKED	JRM
DATE	02/22/16
REVISION	0
SCALE	1/8"=1'-0"
FA-2	



LEVEL 2
FIRE ALARM PLAN
SCALE: 1/8"=1'-0"

RECORD DRAWINGS

REVISION	DESCRIPTION	DATE
1	RECORD DRAWINGS	08/07/2017

Johnson Controls
 22745 29th Dr. SE Bothell, WA 98021
 Main: 425/398-6900 Fax: 425/398-6955
 Electrical Contractor # JOHNSCI366BZ

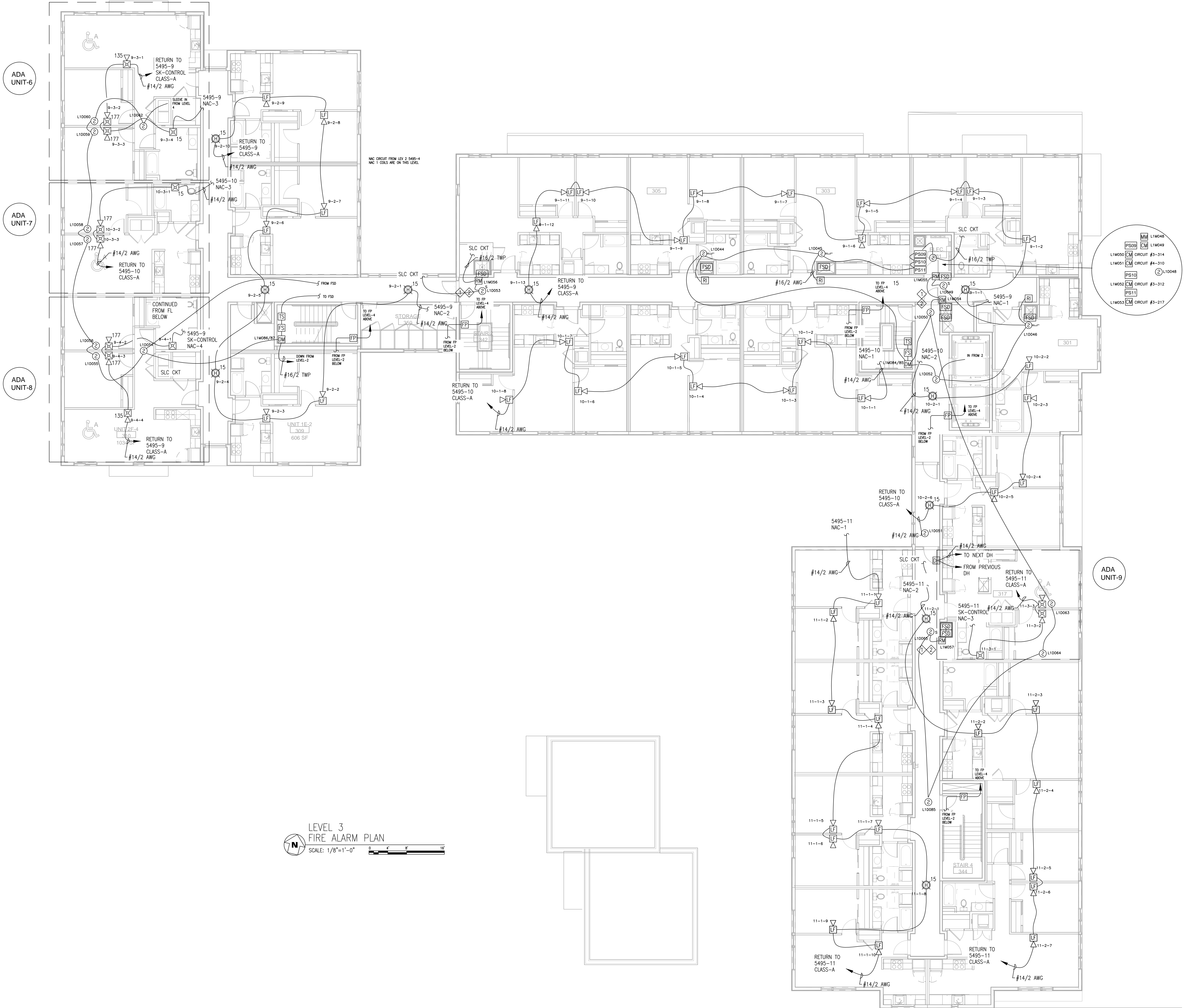
HOA MAI GARDENS
 221 10th AVENUE SOUTH
 SEATTLE, WA
 FA PLAN LEVEL-2

PERMIT#: 6534301

DRAWN	ELM
CHECKED	JRM
DATE	02/22/16
REVISION	0
SCALE	1/8"=1'-0"

FA-3

Reviewed: 02/22/16
 Signed: Edward L. Moody



LEVEL 3
FIRE ALARM PLAN
SCALE: 1/8"=1'-0"

RECORD DRAWINGS

REVISION	DESCRIPTION	DATE
1	RECORD DRAWINGS	08/07/2017

Johnson Controls
 22745 29th Dr. SE Bothell, WA 98021
 Main: 425/398-6900 Fax: 425/398-6955
 Electrical Contractor # JOHNSCI366BZ

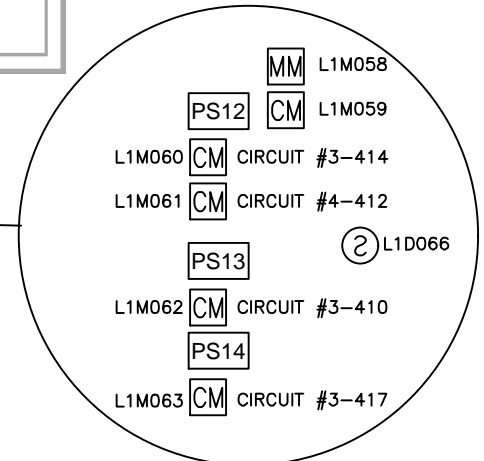
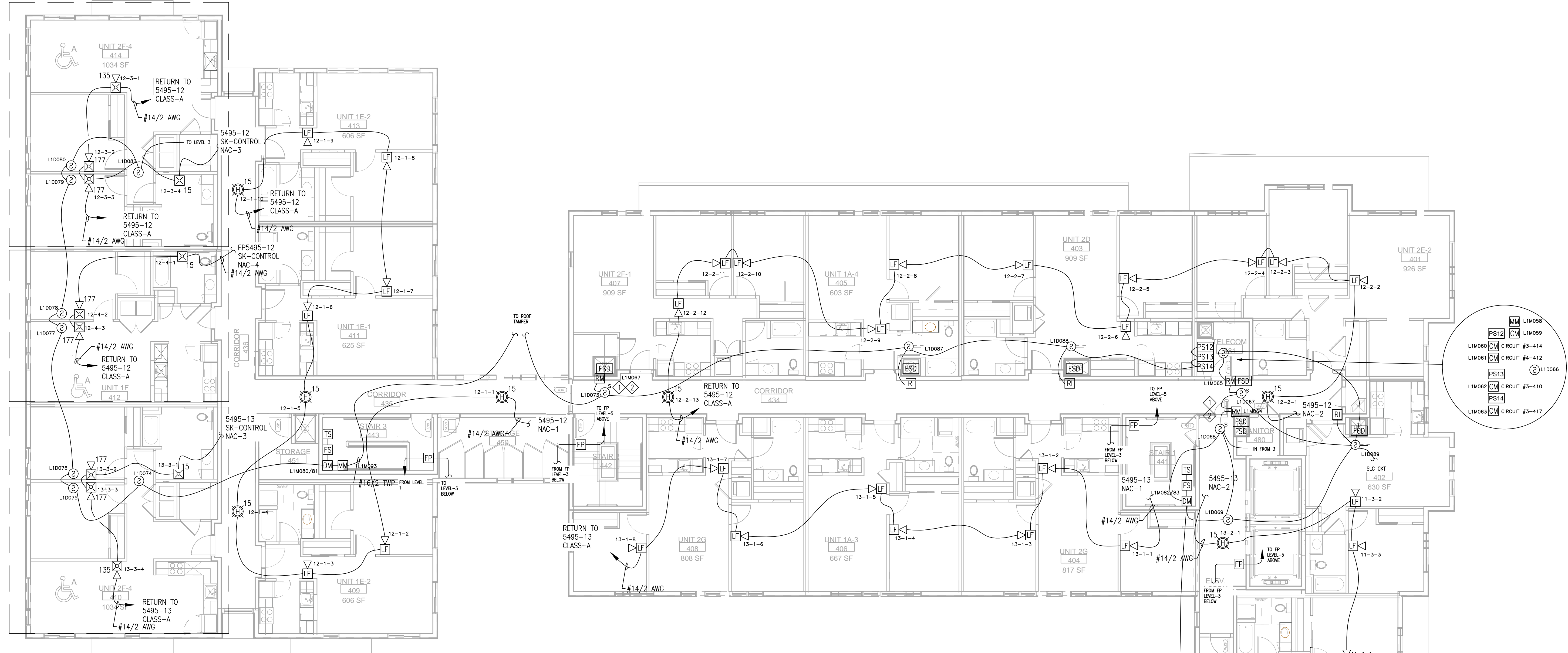
HOA MAI GARDENS
 221 10th AVENUE SOUTH
 SEATTLE, WA
 FA PLAN LEVEL-3

PERMIT#: 6534301

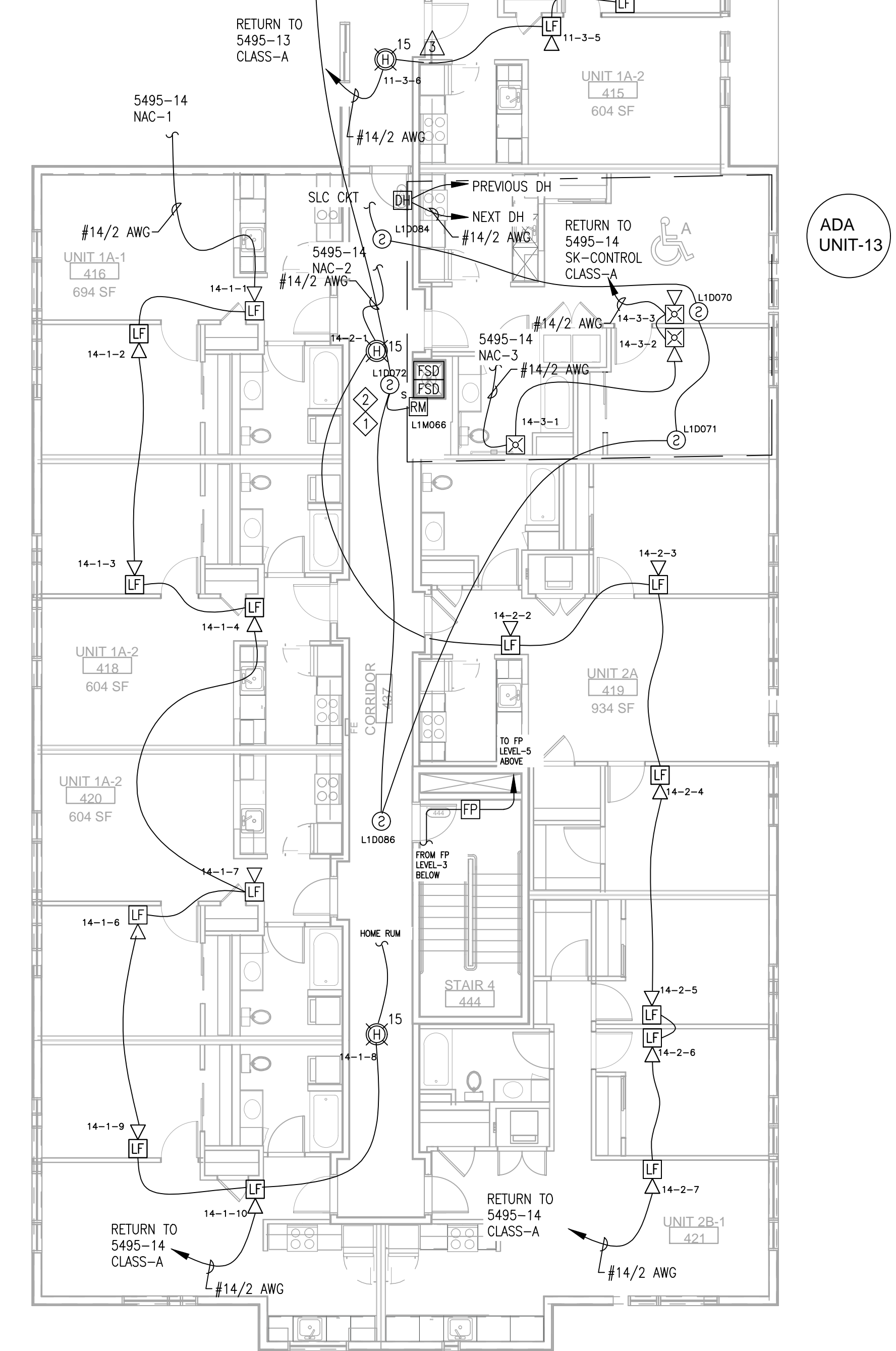
DRAWN	ELM
CHECKED	JRM
DATE	02/22/16
REVISION	0
SCALE	1/8"=1'-0"

FA-4

Edward L. Moody
 NICET Level IV
 Fire Alarm Systems
 Certificate # 84717
 Expires: August 2017
 Reviewed: 02/22/16
 Signed: Edward L. Moody



LEVEL 4
FIRE ALARM PLAN
SCALE: 1/8"=1'-0"



RECORD DRAWINGS

REVISION	DESCRIPTION	DATE
1	RECORD DRAWINGS	08/07/2017

Johnson Controls
 22745 29th Dr. SE Bothell, WA 98021
 Main: 425/398-6900 Fax: 425/398-6955
 Electrical Contractor # JOHNCSIC366BZ

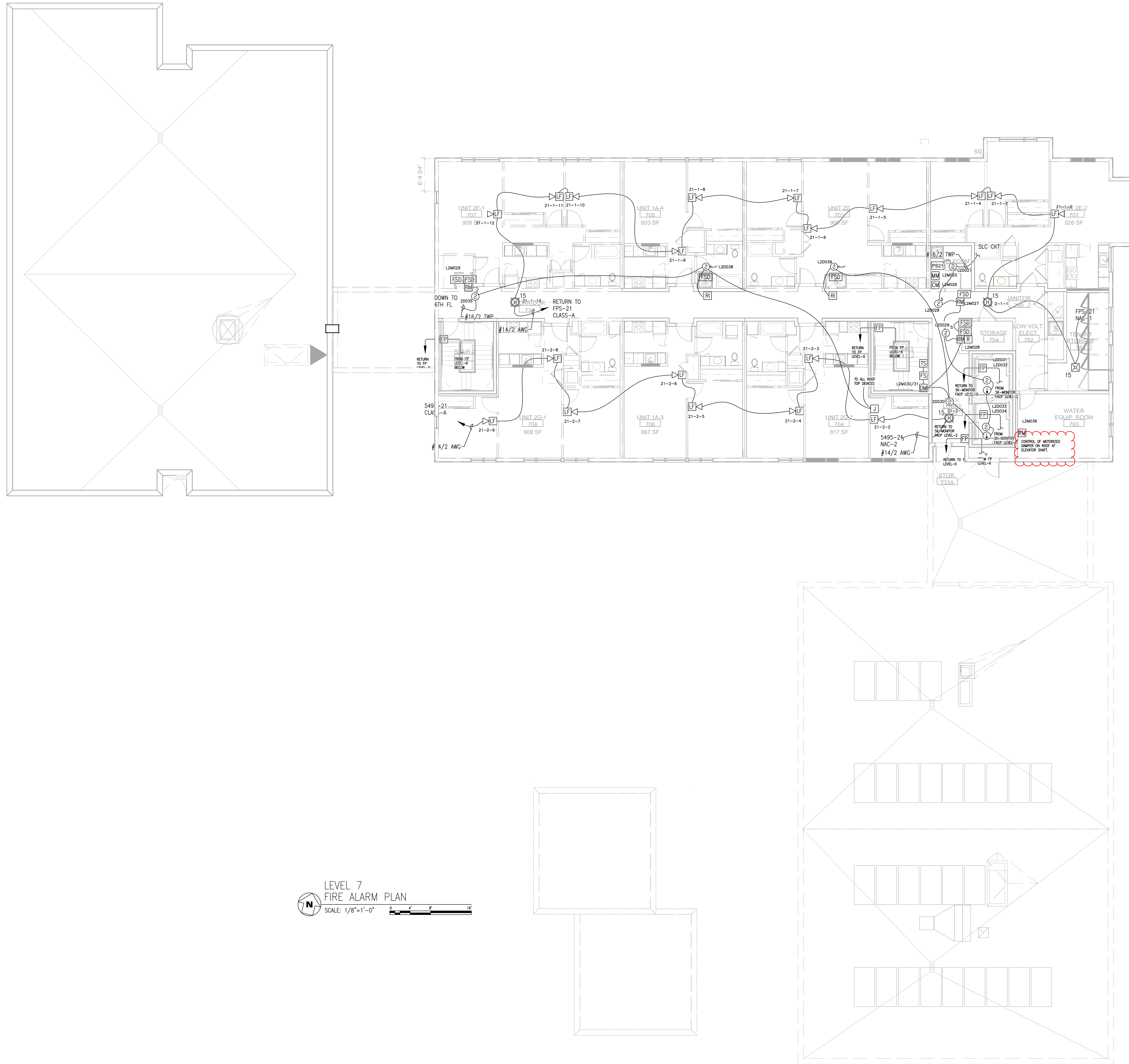
HOA MAI GARDENS
 221 10th AVENUE SOUTH
 SEATTLE, WA
 FA PLAN LEVEL-4

PERMIT#: 6534301

DRAWN	ELM
CHECKED	JRM
DATE	02/22/16
REVISION	0
SCALE	1/8"=1'-0"

FA-5

Edward I. Moody
 NICET Level IV
 Fire Alarm Systems
 Certificate # 84717
 Expires: August 2017
 Reviewed: 02/22/16
 Signed: Edward I. Moody



LEVEL 7
FIRE ALARM PLAN
SCALE: 1/8"=1'-0"

RECORD DRAWINGS

HOA MAI GARDENS
221 10th AVENUE SOUTH
SEATTLE, WA
FA PLAN LEVEL-7

PERMIT#: 6534301

DRAWN	ELM
CHECKED	JRM
DATE	02/22/16
REVISION	0
SCALE	1/8"=1'-0"

Reviewed: 02/22/16
Signed: Edward L. Moody

FA-8

Johnson Controls
22745 29th Dr. SE Bothell, WA 98021
Main: 425/398-6900 Fax: 425/398-6955
Electrical Contractor # JOHNSCI366BZ

REVISION	DESCRIPTION	DATE
1	RECORD DRAWINGS	08/07/2017
2	REVISED RECORD DRAWINGS PER SMR & CLUMAC REVIEW	11/09/2017